

From the sea
...to the stars!



Our Nurturing Vision

A Nurturing School

At Eyemouth Primary School, Nurture is at the heart of our approach to Inclusion and Wellbeing. We strive to promote an inclusive, respectful and caring environment. A nurturing approach recognises that positive relationships are central to both learning and wellbeing. We recognise that everyone within our school community have a role to play in establishing the positive relationships that are required to promote healthy social and emotional development and that these relationships should be reliable, predictable and consistent where possible.

A key aspect of a nurturing approach is the understanding of attachment theory and how early experiences can have a significant impact on development. All school staff have a role to play in establishing the positive relationships that are required to promote healthy social and emotional development and that these relationships should be reliable, predictable and consistent where possible. A nurturing approach has a key focus on our school environment and emphasises the balance between care and challenge, which incorporates attunement, warmth and connection alongside structure, high expectations and a focus on achievement and attainment.

It is based on the understanding of 6 Nurturing Principles, which have been adapted and are outlined below:

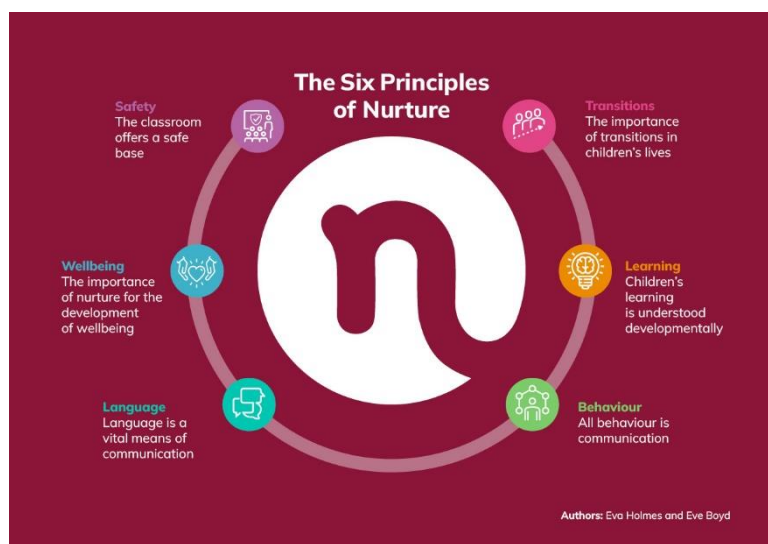
1. Children's learning is understood developmentally
2. The environment offers a safe base
3. The importance of nurture for the development of wellbeing
4. Language is a vital means of communication
5. All behaviour is communication
6. Transitions are important in children and young people's lives.

The two key strands of our nurturing approach are:

1. A caring approach that includes a high level of connection, empathy, warmth and responsiveness.
2. A structured approach that is consistent, routine based, with high expectations

Eyemouth Primary is a Nurturing School

Our vision is supported through our understanding and implementing of the 6 nurturing principles. These are the responsibility of all staff within our school.



1) Children's learning is understood developmentally

Staff at Eyemouth Primary take a holistic view of the child's learning and respond appropriately by setting challenging targets for progress. We respond to our children based on who they are with a non-judgmental and accepting attitude.

2) The environment offers a safe base

- Our classrooms and learning areas provide a caring inclusive and warm environment.
- We provide safe 'Nurture Nook's' for all our children to access.
- Boundaries and routines are explicit and fair.

3) The Importance of nurture for the development of wellbeing

All staff at Eyemouth Primary use effective approaches to support the wellbeing and resilience of our children. Our children respond to being valued, we make sure we notice, praise and celebrate achievements.

4) Language is a vital means of communication

- All staff use language that supports children and young people to feel safe, valued, included and cared for.
- All staff support the development of the language of emotions and relationships.

5) All behaviour is communication

- All staff are attentive to children and young people's non-verbal communication.
- All staff make every effort to understand what a child is communicating through their behaviour and respond accordingly.
- All staff will strive to make the link between the external/internal worlds of our children.

6) The importance of transition in children's lives

- All staff will support children as they move through the routines of the day.
- We ensure that there are clear welcome routines at transition points throughout the day.

Our nurturing approach will be a key part of our approach to closing the attainment gap, reducing inequality and improving outcomes for all our children.